

Features

Before | After
Design
Event
Fittings
Materials | Finishes



RSS / Bloglovin

About Me

This is our blog about what we get up to through the year and ideas that we like to share. We are based in Bree Street in central Cape Town and feel incredibly excited about our city being chosen as World Design Capital 2014. We hope you will enjoy the images we post as much as we do. After ten years in the industry we are still excited about bathroom design and the evolution of new products and materials. Feel free to be in touch with us.

Bathroom basin with attitude

AUGUST 25, 2014 / FITTINGS / REPLY



The brief from bathroom manufacturer **Scarabeo** to design consultancy EMO was to come up with a functional but aesthetic basin that could adapt to many environments.

"The Fuji collection was designed with that aim and it is characterised by soft and essential lines that evolve from the basin to all its complements," says Lukasz Bertoli the industrial designer who headed the project.



It really is all about the basin. The console and the mirrors are fantastic too but it's the basin which sets the collection apart, its distinctive detail being the circular ceramic plate that covers the waste.

"The design language interprets the continuous flowing of water through convex lines that evolve into soft surfaces, giving the pleasant feeling of ceramic naturalness," continues Bertoli.



The collection will be a highlight of the Scarabeo stand at the upcoming **CERSAIE** – the annual international exhibition of ceramic tiles and bathroom furnishings, being held between 22-26 September in Bologna, Italy.

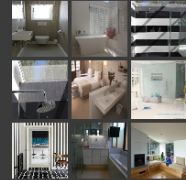
Photos: Scarabeo Ceramica

Search

Archives

- September 2014
- August 2014
- July 2014
- June 2014
- May 2014
- April 2014
- March 2014
- February 2014
- January 2014
- November 2013
- October 2013
- September 2013
- August 2013
- July 2013
- June 2013

On Pinterest



More Pins